

Items the City Can Collect

* Put items out at the collection point by **8:30AM** on the designated collection day.

Combustible Garbage (items that can be burned)

Designated combustible garbage bags

Or transparent/semi-transparent commercial plastic bag

| Size | Thickness |
|-------------------------|--------------|
| Over 30L, less than 45L | Over 0.03mm |
| Over 20L, less than 30L | Over 0.025mm |
| Over 10L, less than 20L | Over 0.02mm |

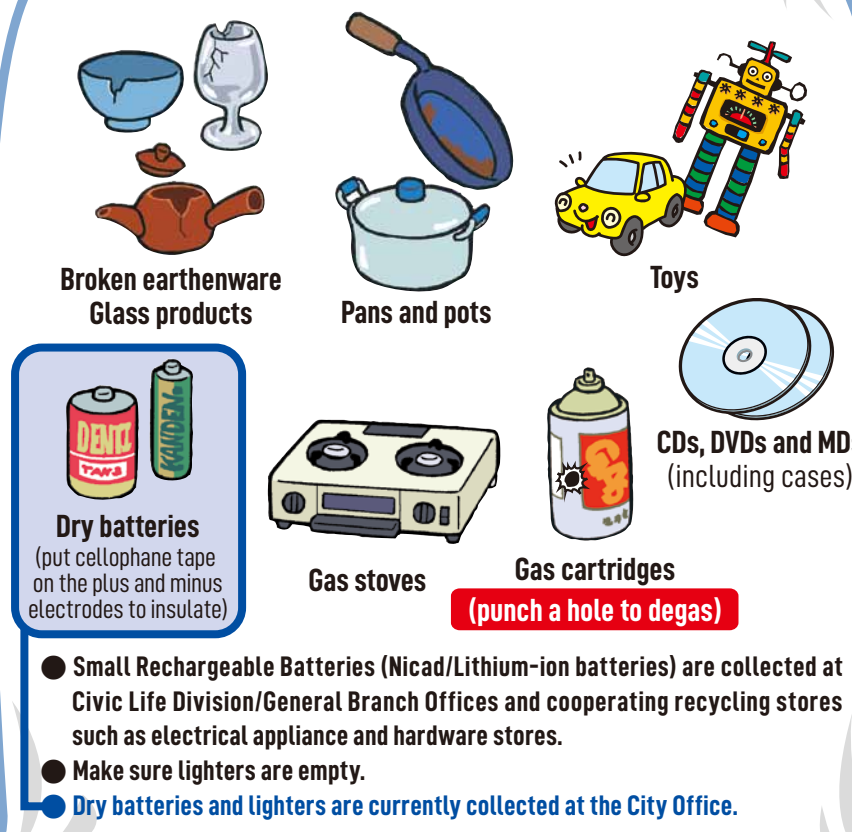
* Grocery bags and plastic bags smaller than 10L may not be used.
* Milky white or other colored, semi-transparent bags may not be used.



Non-combustible Garbage (items that cannot be burned)

Designated non-combustible garbage bags

* Commercial plastic bags and grocery bags may not be used.



Plastic Containers and Packaging

Designated garbage bags for plastic containers and packaging

Or transparent commercial plastic bags (semi-transparent not accepted)

| Size | Thickness |
|-------------------------|--------------|
| Over 30L, less than 45L | Over 0.025mm |

* Grocery bags and plastic bags smaller than 30L may not be used.

Make sure items are clean before putting out.

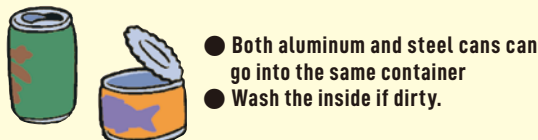


Containers and packaging refer to... Containers or wrapping on goods that is no longer needed after the item is taken out and used.

Recyclable Garbage (items that can be recycled)

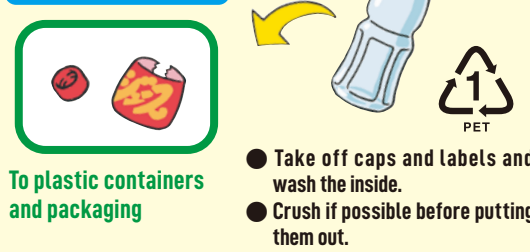
Empty cans

Container



PET bottles

Net container



Empty bottles

Container

* Brownish 1.8L bottles and beer bottles are "live bottles (returnable bottles)" and should be returned to where they were purchased.

Colorless/Transparent



Brownish



Blue/Greenish



Black



Wash the inside if dirty. (put caps into non-combustible garbage)
Bottles for cosmetics or chemicals as well as bottles with uncleanable dirty marks should be put out as non-combustible garbage.

Paper packages



Newspapers



Corrugated cardboards



Magazines and other paper products

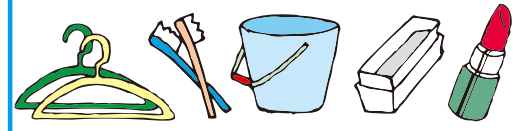


Attention

Items that are not categorized as plastic containers and packaging

* Coat hangers, toothbrushes, plastic buckets, planters and certain other plastic products, as well as containers with dirty marks that do not come off cannot be categorized as plastic containers and packaging.

To non-combustible garbage



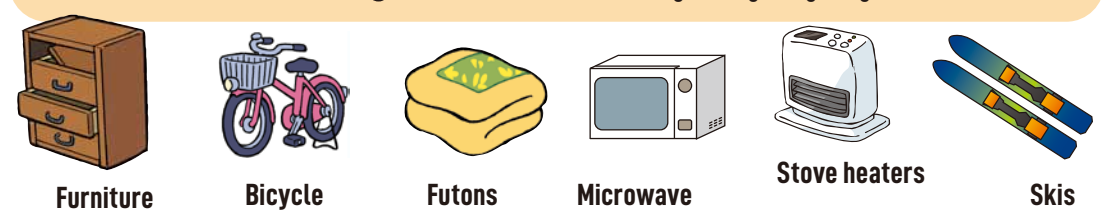
To combustible garbage



* If dirty marks can be cleaned off, they can be categorized under plastic containers and packaging.

Oversize Garbage

* Oversize garbage is household garbage that is too big to fit into the designated garbage bags.



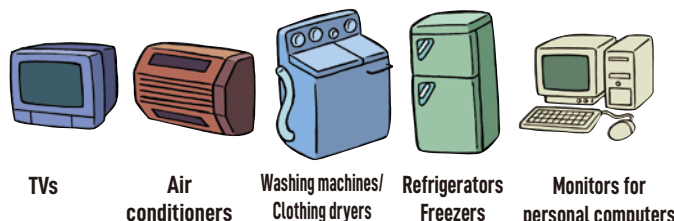
Collection of oversized garbage by the City is typically scheduled three times a year, in May, August, and November.
Tatami mats and fittings (fusumas and sash doors) are not categorized under this, but as waste from business establishment associated with rebuilding and remodeling. In other cases, consult with Civic Life Division or Citizens' Affairs Division of General Branch Offices.

* For tatami mats and fittings, prior confirmation with the municipal office is necessary regardless of whether they can be collected by the "Collection of oversized garbage by the City" or "Directly brought in by yourself to the Environmental Center Yamato Factory."

Items the City Cannot Collect

Items that cannot be brought into the Environmental Center Yamato Factory

Products subject to the Home Appliances Recycling Law



For disposal of the four recyclable home appliances request the store the item was purchased or a licensed garbage disposal vendor (fees apply).
Household personal computers shall be collected and recycled by the manufacturer.

For more information on recycling of personal computers, search → [PC3R](#) (Website for PC3R Promotion Association)

Articles difficult to dispose



LP gas cylinders, agricultural plastic sheets, concrete blocks, medical equipment, etc.

Ordinary business waste / One-time large quantity household garbage

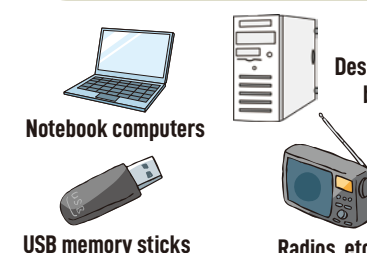


Garbage produced through business activities
One-time large quantity household garbage due to reasons such as moving

Garbage produced through business activities such as restaurants, stores, and factories (ordinary business waste) should be brought into the Environmental Center Yamato Factory (fees apply), or request to a general licensed garbage disposal vendor (fees apply).
If you have an unusual amount of garbage due to reasons such as moving, bring them into the Environmental Center Yamato Factory (no fees) yourself, or request a general licensed garbage disposal vendor (fees apply).

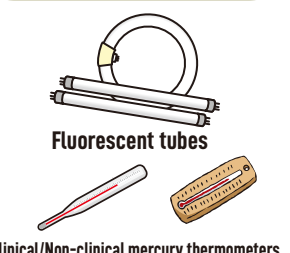
Bring to the City Office! (Civic Life Division/General Branch Offices)

Small household appliances



*For more detailed information on collectable items, etc., please inquire at Civic Life Division or General Branch Offices.
Waste from business establishments are not included in this category.
Be sure to erase all personal information.
Take out all batteries.
Collected small household appliances cannot be returned.

Products using mercury



When disposing of fluorescent tubes, clinical and non-clinical thermometers from your household, do not dispose of them at the garbage collection point.
Some home appliance and hardware stores collect used fluorescent tubes.

General licensed garbage disposal vendors in Kitakata City

Licensed vendors located within Kitakata City (0241)

| | |
|---------------------------------|---------|
| Aizu Sugawara Ltd. | 23-7771 |
| Arakawa Sangyo Co., Ltd. | 21-1511 |
| Iide Co., Ltd. | 38-3808 |
| Kitakata Sogo Eisei Center Ltd. | 22-1594 |
| Grin Earth Ltd. | 23-0100 |
| Showa Eisei Ltd. | 22-0289 |
| Takasato Seiso Ltd. | 22-2553 |
| Tsukahara Kogyo Ltd. | 27-8256 |
| Tsukahara Shoun Ltd. | 27-7551 |
| Pierce Ltd. | 21-4070 |
| Marusa Unso Ltd. | 22-7554 |
| Yamato Jinkai Shushusha Ltd. | 38-3272 |

Licensed vendors located outside Kitakata City

| | |
|---------------------------------|--------------|
| Aizu Dust Center Co., Ltd. | 0242-36-5351 |
| Kita-shiobara Eisei Center Ltd. | 0241-33-2379 |
| Sato Sogyo Co., Ltd. | 0242-24-5933 |
| Sakashita Recycle Service Ltd. | 0242-83-3402 |
| Matsuura Shoji Co., Ltd. | 0242-27-4433 |

If you wish to dispose on days other than the designated household garbage collection days, you may bring them yourself to the Environmental Center Yamato Factory

Environmental Center Yamato Factory

0241-38-3005

Items that can be brought in: Household combustible, non-combustible and oversized garbage
Items that cannot be brought in: Industrial waste (construction waste, agricultural fertilizer bags, seedling boxes, pipes, etc.), recyclable home appliances, tires, personal computers, etc.

For Inquiries Regarding Garbage Disposal

Kitakata City Civic Life Division 0241-24-5285

Or Citizens' Affairs Division of General Branch Offices

Atsushio-kano General Branch Office, Citizens' Affairs Division 36-2113
Yamato General Branch Office, Citizens' Affairs Division 38-3825

Siokawa General Branch Office, Citizens' Affairs Division 27-2400
Takasato General Branch Office, Citizens' Affairs Division 0241-44-2113

For other information regarding garbage, please refer to the City's website.